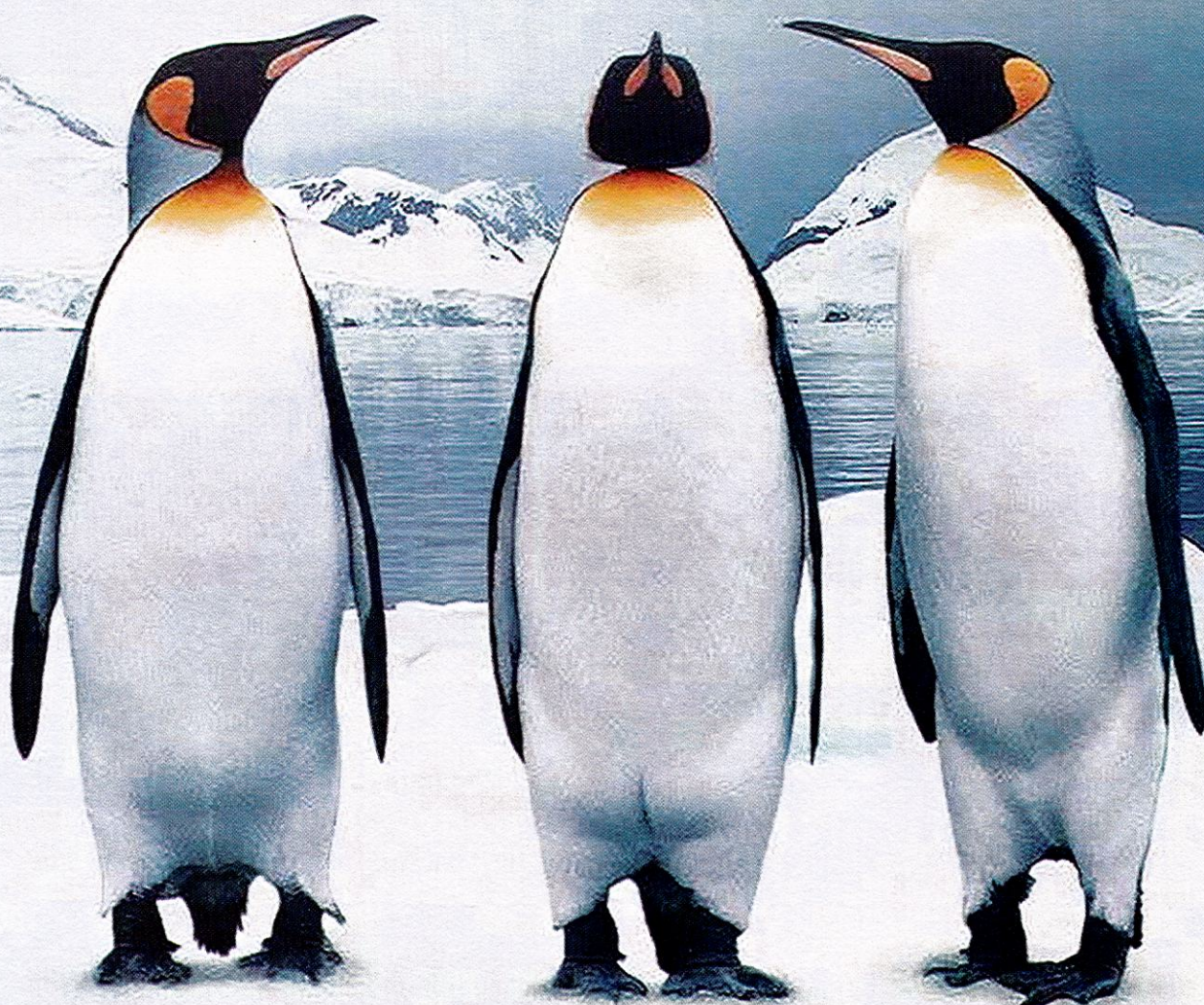




# TASMAN SEA, S.L.

CATALOGUE





# THE COMPANY– TASMAN SEA S.L

TASMAN SEA, S.L. is a company specialized in the import and distribution of deep-frozen seafood. Since its inception in 2003, the company has undergone great growth and has positioned itself as one of the leading companies in the sector of frozen foods.

The company has several clearly defined lines of action: import, commercialization, direct sales of containers and export.

TASMAN SEA, S.L. Is present in all the important international trade fairs of the sector in Europe, Asia and America, such as SEAFOOD EXPO BRUSSELS, SEAFOOD EXPO AMERICA DEL NORTE, CONXEMAR, SHANGHAI SEAFOOD EXPO, VIETFISH Y CHINA SEAFOOD EXPO.

## OUR VALUES

We believe that we can always take advantage of the capabilities, skills and experience of our employees, suppliers and clients, with a clear focus on cooperation and in the contribution of new ideas and projects.

LOCATION: CENTRAL OFFICE





# PRODUCTS

## WHITE WHOLE CLAM (MERETRIX LYRATA) VIETNAM

SIZE:

40/60 · 60/80 · 90/120

PACKING:

1 X 6 · 6 X 1 · 1 X 10

VACUUM - IQF - BULK



## BROWN WHOLE CLAM (MERETRIX LYRATA) VIETNAM

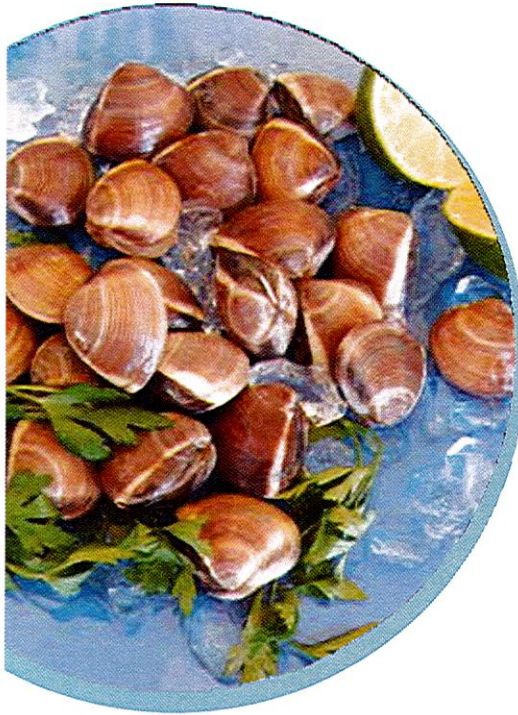
SIZE:

60/80 · 70/90 · 90/120

PACKING:

1 X 6 · 6 X 1 · 1 X 10

VACUUM - IQF - BULK



## PEELED SHRIMP (SOLENOCERA MELANTHO) - (SPP) CHINA

SIZE:

10/30 · 30/50 · 50/70  
70/100 · 100/200

PACKING:

6 X 1

IQF - BULK



## BABY OCTOPUS (OCTOPUS VULGARIS) VIETNAM

SIZE:

20/40 · 40/60 · 60/+

PACKING:

5 X 1

BLOCK





**BABY SQUID  
(LOLIGO  
JAPÓNICA)  
CHINA**



SIZE:  
3/5 · 4/6

PACKING:  
10 X 1 · 6 X 1

BLOCK - IQF



**CLEANED  
CUTTLEFISH  
(SEPIA  
PHARAONIS)  
INDIA**

SIZE:  
2/4 · 5/7 · 8/12 · 13/20 · 20/40

PACKING:  
1 X 6 · 6 X 1

BLOCK . IQF



**FRENCH  
CUTTLEFISH  
(SEPIA  
OFFICINALIS)  
FRANCIA**



SIZE:  
300/500 · 500/1000 · 1000/+

PACKING:  
1 X 12

BLOCK - IQF

**CLEANED  
SQUID  
(LOLIGO  
CHINENSIS)  
CHINA**

SIZE:  
10/20 · 20/40

PACKING:  
6 X 1

BLOCK - IQF



**CLEANED SQUID  
(LOLIGO DUVAUCELI)  
INDIA**



SIZE:  
10/20 · 20/40

PACKING:  
6 X 1 · 6 X 2 · 10 X 2

BLOCK - IQF



**SQUID TUBE  
(ILLEX  
ARGENTINUS-  
TODARODES  
PACIFICUS)  
CHINA**

SIZE:  
15/18 · 20/22 · 23/28 · 28+

PACKING:  
1 X 5 · 5 X 1

INTERLEAVED-IQF

**MONKFISH TAILS  
(LOPHIUS LITULÓN)  
CHINA**



SIZE:  
80/150 · 150/200 · 200/300  
300/500 · 500/700 · 1000+

PACKING:  
6 X 1 · 3 X 2

IQF



**PANGASIUS  
FILLET  
(PANGASIUS  
HYPOPHTALMUS)  
VIETNAM**

SIZE:  
80/120 · 120/170 · 170/220

PACKING:  
5 X 1 · 1 X 5

IQF - INTERLEAVED



**COD FILLET (GADUS  
MORHUA) CHINA**

SIZE:  
200/500 · 500/1000 · 1000/+

PACKING:  
1 X 11 · 1 X 7 · 1 X 10

IQF



**ALASKA POLLOCK  
FILLET  
(THERAGRA  
CHALCOGRAMMA)  
CHINA**

SIZE:  
2/4 · 4/6 · 6/8

PACKING:  
1 X 6 · 6 X 1

IQF - BULK



**LIMANDA FILLET  
(LIMANDA ASPERA)  
CHINA**

SIZE:  
80/120 · 120/170

PACKING:  
6 X 1 · 1 X 6

IQF



**TILAPIA FILLET**

**(OREOCHROMIS  
NILOTICUS)  
CHINA /  
VIETNAM**

SIZE:  
3/5 · 5/7 · SKINLESS · SKINON

PACKING:  
6 X 1 · 5 X 1

IQF

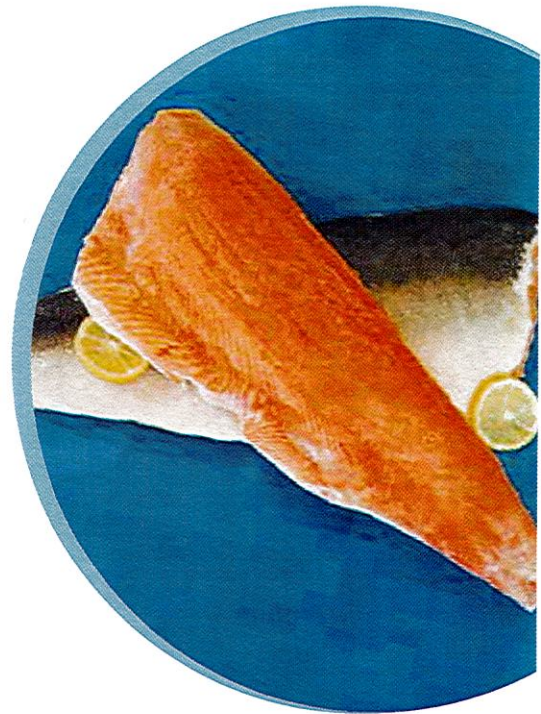


**SALMON FILLET  
(ONCORHYNCHUS  
KETA)  
CHINA**

SIZE:  
800/1500 · 900/1200

PACKING:  
1 X 10

IQF



**BREADED  
CRAB CLAWS  
(NEMIPTERUS  
SPP)  
CHINA**

SIZE:

PACKING:  
10 X 1 Kg · 20 X 250 gr

**SURIMI CRAB  
STICK  
(NEMIPTERUS  
SPP)  
CHINA**

SIZE:  
ONE SIZE

PACKING:  
20 X 250 gr · 10 X 900 gr

VACUUM - IQF

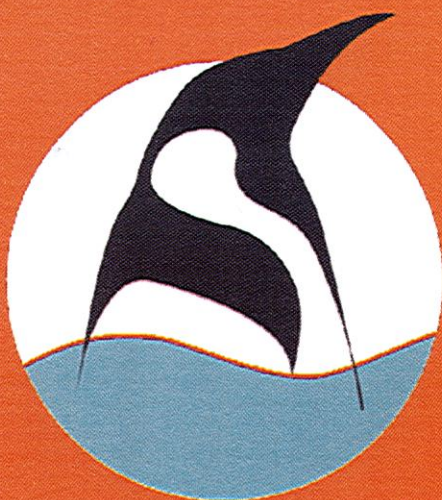
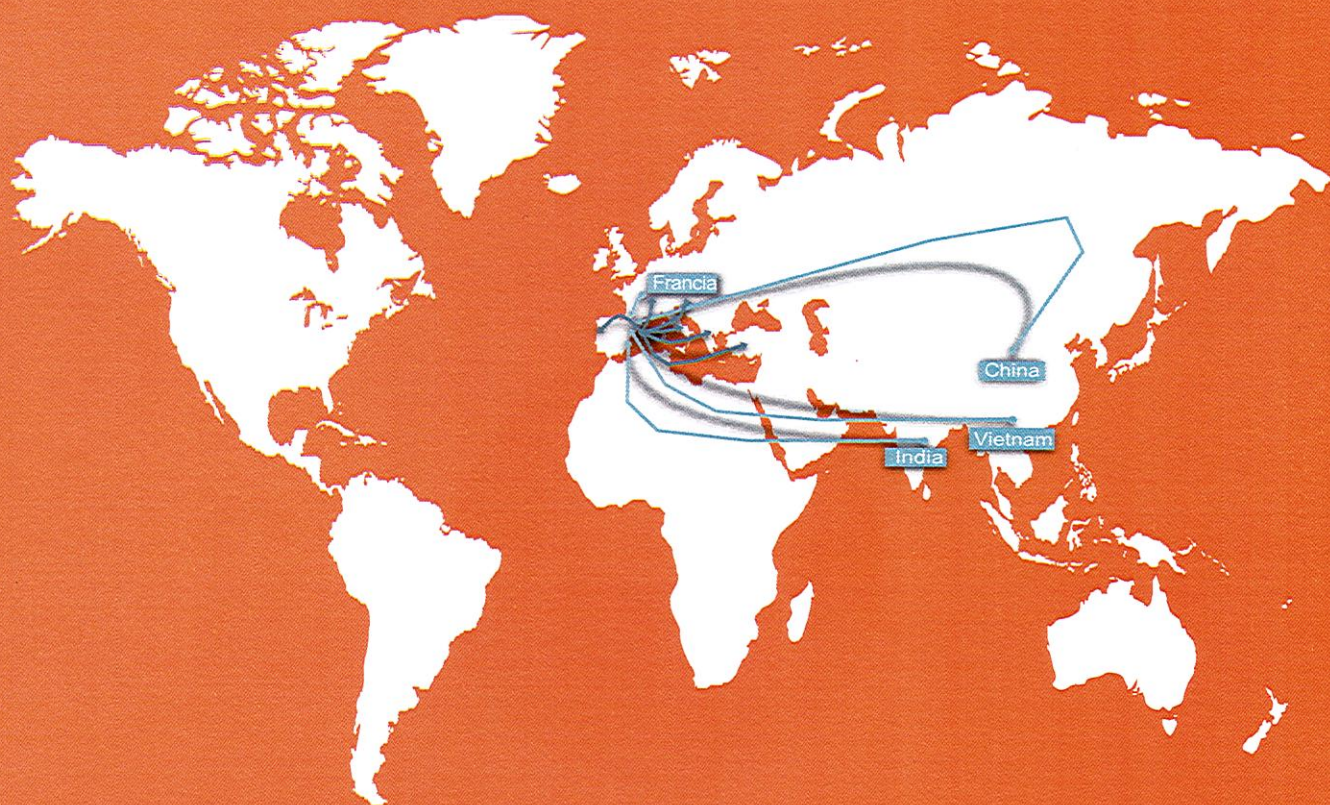


**SMELT  
(ATHERINA  
BOYERI)  
TURQUIA**

SIZE:  
5/7 Cm

PACKING:  
12 X 1  
IQF





## **TASMAN SEA, S.L.**

C/ Rbla Àngel Guimerà, 31

08328 Alella Barcelona

Telf : 93 540 80 08

[www.tasmansea.es](http://www.tasmansea.es)

[administracion@tasmansea.es](mailto:administracion@tasmansea.es)